

THANK YOU for COMING to the SHOW!!!!

Samoyed Club of Washington State Running Order and Class Information June 9-11, 2023

Fun Fur Paws – Mt. Vernon, WA

I-5 North/South: Take Exit #218 (Starbird Rd) and East (Southbound turn left, Northbound turn right). Continue East to the 4-way stop at Bulson Rd and turn left. Follow Bulson Rd. to the intersection with Tyee Rd (0.7 mi). Turn left and then after a short distance, turn right onto Stargate Place (look for the sign for Fun Fur Paws). Follow the road to the arena and parking.

Judge: Dan Butcher & Geoff Teare

Class Schedule: See charts below: Start 10:00 AM Friday and 9:00 AM on weekend

Opening/Closing: Opened 4/19, closed 6/2

Walkthroughs: There will be split walkthroughs for **Exc Std and Jww**. All other classes will be a combined walkthrough. There will be plenty of walkthrough time for each class, so don't worry.

Veterinarian: 24 Hour Pet Emergency Center, 14434 Avon Allen Rd., Mt. Vernon, WA 360-848-5911
Chuckanut Valley Veterinarian (staffed 24/7), 896 N. Burlington Rd., Burlington, WA 360-757-3722

Moveups: The deadline for moveups is 6/5/23. Moveups must be received in writing or email by that deadline. Day-to-Day moveups are being accepted for Saturday and Sunday.

Setup and crating: There is NO general crating allowed in the building at this time.

Popup tents and crating is available along the West fence and North grass areas. If you are crating from your car, make sure to leave windows/doors open for air flow. If using a popup or crate on the grass, please do NOT use mats or leave items overnight.

RVs: Overnight RV camping is limited and must be reserved. Email k.timmons@earthlink.net with questions.

Food: We will NOT be providing any food, snacks or refreshments at the show. Please bring your own provisions 😊

Workers: We STILL need your help putting on the show. If you can help out for a class – or a day – let us know. We'll have a chief worker person coordinating thing and likely have the white boards setup like usual. THANKS!

Measuring: A volunteer measuring official will be on site. Check with the score table for more info.

Sammy PotLuck BBQ!!!! Saturday Night after the show.

The Club will have some proteins for the BBQ.

Bring a dish to share 😊

Go To
www.r2agility.net
for Check-In, Running Order, and Maps

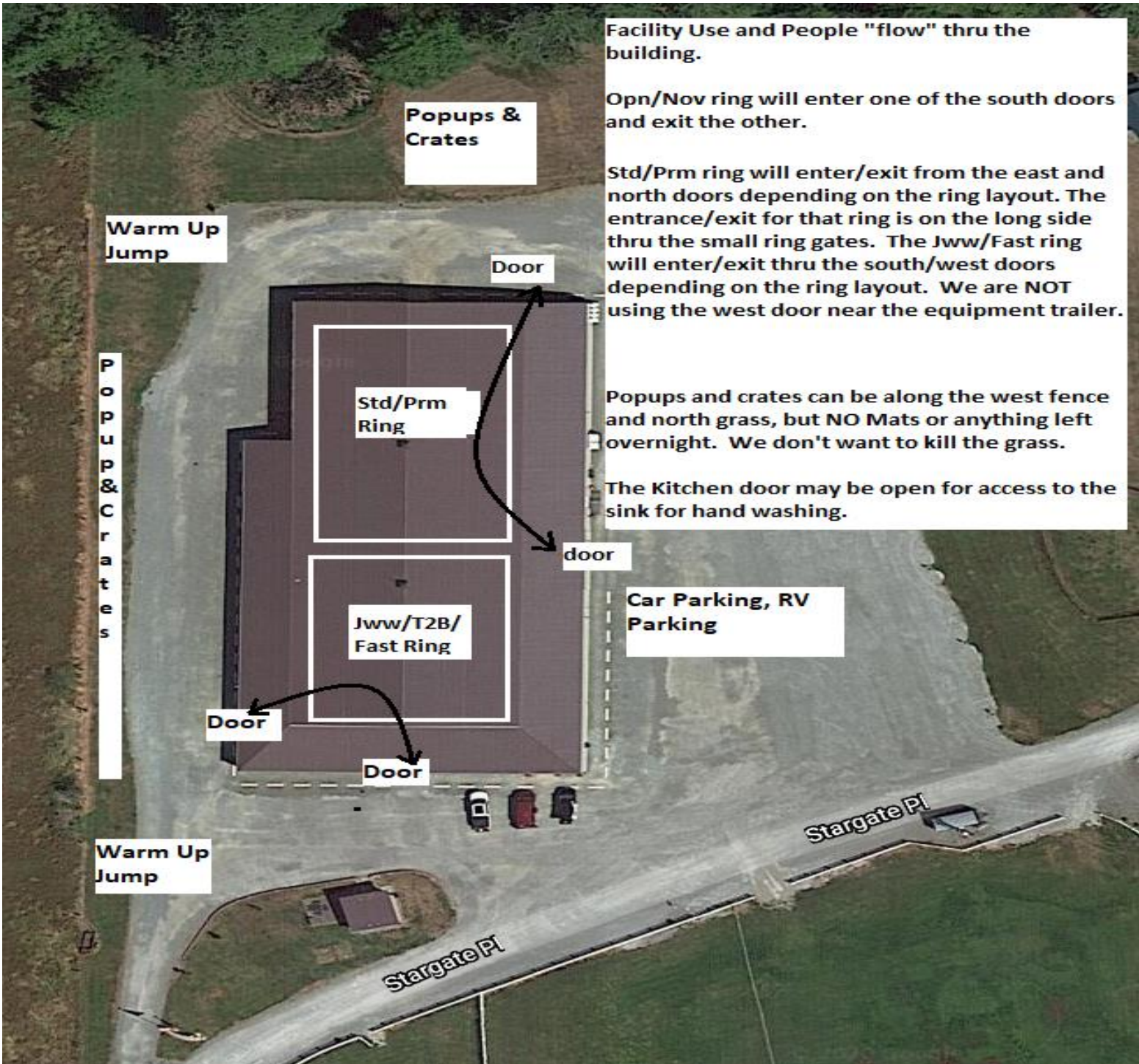
- Course Maps:** We will not be providing general paper copies of course maps. Maps will be made available on our website – www.r2agility.net sometime after **midnight**. **Judges are not allowed to send us maps until after midnight** and we will make every effort to email/post them by 7:30 AM. Maps will be posted at a couple of places around the arena.
- Gate Check-in:** We will have a normal gate steward with a paper gate sheet and may be using an electronic gate checking and monitoring system available by any internet enabled device with a web browser.
- The system allows you to check-in, mark conflict or absent, see progress, and live scores as they are entered into the computer. Please check the status to make sure your runs are correct.
- Maps will also be available on the same page sometime after 7:30 AM.
- Results:** Results will be posted in the arena and will be available on the same web page as the running order.

Important Housekeeping Info

Please use the exercise fields or the grassy areas around the parking lot to walk your dog. Please pick up after your dog. If your dog accidentally relieves itself on the building structure, please use the cleaning sprays provided by Fun Fur Paws.

Pull-in parking around the building ONLY. Do NOT back in to park around the building. If you do, you will be required to re-park.

5 MPH Speed Limit at Fun Fur Paws



Facility Use and People "flow" thru the building.

Opn/Nov ring will enter one of the south doors and exit the other.

Std/Prm ring will enter/exit from the east and north doors depending on the ring layout. The entrance/exit for that ring is on the long side thru the small ring gates. The Jww/Fast ring will enter/exit thru the south/west doors depending on the ring layout. We are NOT using the west door near the equipment trailer.

Popups and crates can be along the west fence and north grass, but NO Mats or anything left overnight. We don't want to kill the grass.

The Kitchen door may be open for access to the sink for hand washing.

Warm Up Jump

Popups & Crates

P
o
p
u
p
&
C
r
a
t
e
s

Door

Std/Prm Ring

door

Jww/T2B/
Fast Ring

Car Parking, RV
Parking

Door

Door

Warm Up
Jump

Stargate Pl

Stargate Pl

	Ring 1	Ring 2
<p>Friday 10:00 AM start</p> <p>Tall to Small</p> <p>First time in each ring is accurate, all others are estimates. Plan to be at the trial site well before the listed time in case we run early.</p>	<p>Prm Jww Walk 10:30 Run</p> <p>Prm Std Walk 11:30 Run</p> <p>Exc Std Walk 24-16 12:40 Run 24-16</p> <p>Walk 12-4 1:50 Run 12-4</p> <p>Open Std Walk 3:00 Run</p> <p>Novice Std Walk 3:50 Run</p> <p>4:05 Done</p>	<p>Fast Exc/Opn/Nov Walk 10:00 Run all heights / classes</p> <p>T2B Walk 11:15 Run</p> <p>Nov Jww Walk 12:20 Run</p> <p>Open Jww Walk 1:00 Run</p> <p>Exc Jww Walk 24-16 2:00 Run 24-16</p> <p>Walk 12-4 2:50 Run 12-4</p> <p>3:15 Done</p>

Saturday

9:00 AM start

Small to Tall

First time in each ring is accurate, all others are estimates. Plan to be at the trial site well before the listed time in case we run early.

9:30 **Prm Jww**
Walk
Run

10:45 **Prm Std**
Walk
Run

12:00 **Exc Std**
Walk 4-12
Run 4-12

12:50 Walk 16
Run 16

1:30 Walk 20-24
Run 20-24

2:40 **Open Std**
Walk
Run

3:30 **Novice Std**
Walk
Run

3:45 Done

9:00 **Fast Exc/Opn/Nov**
Walk (4-16)
Walk (20-24)
Run all heights / classes

10:20 **T2B**
Walk (4-16)
Walk (20-24)
Run

11:30 **Nov Jww**
Walk
Run

12:20 **Open Jww**
Walk
Run

1:10 **Exc Jww**
Walk 4-12
Run 4-12

1:50 Walk 16
Run 16

2:20 Walk 20-24
Run 20-24

2:45 Done

Sunday

9:00 AM start

Tall to Small

First time in each ring is accurate, all others are estimates. Plan to be at the trial site well before the listed time in case we run early.

9:30 **Prm Jww**
Walk
Run

10:30 **Prm Std**
Walk
Run

11:50 **Exc Std**
Walk 24-20
Run 24-20

12:40 Walk 16
Run 16

1:15 Walk 12-4
Run 12-4

2:25 **Open Std**
Walk
Run

3:15 **Novice Std**
Walk
Run

3:30 Done

9:00 **Fast Exc/Opn/Nov**
Walk
Run all heights / classes

10:25 **T2B**
Walk
Run

11:30 **Nov Jww**
Walk
Run

12:20 **Open Jww**
Walk
Run

1:10 **Exc Jww**
Walk 24-20
Run 24-20

1:45 Walk 16
Run 16

2:15 Walk 12-4
Run 12-4

2:40 Done

TRIAL ENTRY STATISTICS

Preliminary running order contingent on move-ups not yet received.

Friday – 308 runs

STD	NOV										
Division	4	8	12	16	20	24	24C	14	18	Judge	Ring
NOV A					1	1				Dan Butcher	1
NOV B			1	1	1	1				Dan Butcher	1
NOV P		1	2	2	1					Dan Butcher	1
NOV		1	3	3	3	2				TOTAL	12
Division	4	8	12	16	20	24	24C	14	18	Judge	Ring
OPEN					1	4				Dan Butcher	1
OPEN P					1	2				Dan Butcher	1
OPN					2	3	4			TOTAL	9
Division	4	8	12	16	20	24	24C	14	18	Judge	Ring
EX					2	5	3			Dan Butcher	1
EX P		1	2	2	2					Dan Butcher	1
MAS		8	6	2	9	3				Dan Butcher	1
MAS P	1	5	6	15	2					Dan Butcher	1
EXC	1	14	14	21	18	6				TOTAL	74
Division	4	8	12	16	20	24	24C	14	18	Judge	Ring
PRM					3	8	1			Dan Butcher	1
PRM P		1	3	4	1					Dan Butcher	1
PREM		4	5	5	9	1				TOTAL	24
Division	4	8	12	16	20	24	24C	14	18	Judge	Ring
NOV A					1	1				Geoff Teare	2
NOV B		1	1	1	2	1				Geoff Teare	2
NOV P	1		1	2	1					Geoff Teare	2
NOV	1	1	2	3	4	2				TOTAL	13
Division	4	8	12	16	20	24	24C	14	18	Judge	Ring
OPEN					1	2	3			Geoff Teare	2
OPEN P					2	2	1			Geoff Teare	2
OPN					3	4	3	3		TOTAL	13
Division	4	8	12	16	20	24	24C	14	18	Judge	Ring
EX		1			3	2				Geoff Teare	2
EX P		1	1	2	1					Geoff Teare	2
MAS		7	4	5	10	4				Geoff Teare	2
MAS P	1	5	6	13	3					Geoff Teare	2
EXC	1	14	11	20	17	6				TOTAL	69
Division	4	8	12	16	20	24	24C	14	18	Judge	Ring
PRM					1	2	8	2		Dan Butcher	1
PRM P					2	3	1			Dan Butcher	1
PREM		1	3	5	9	2				TOTAL	20
Division	4	8	12	16	20	24	24C	14	18	Judge	Ring
NOV A					1					Geoff Teare	2
NOV B		2			1	1				Geoff Teare	2
NOV P			1	1	1					Geoff Teare	2
NOV		2	1	1	3	1				TOTAL	8
Division	4	8	12	16	20	24	24C	14	18	Judge	Ring
OPEN					1	1				Geoff Teare	2
OPEN P						1				Geoff Teare	2
OPN					1	2				TOTAL	3
Division	4	8	12	16	20	24	24C	14	18	Judge	Ring
EX		1			2					Geoff Teare	2
EX P				1						Geoff Teare	2
MAS		6	3	1	4	2				Geoff Teare	2
MAS P		1	2	2						Geoff Teare	2
EXC		8	5	4	6	2				TOTAL	25
Division	4	8	12	16	20	24	24C	14	18	Judge	Ring
PREF	2	4	4	4	2					Geoff Teare	2
REG		4	3	3	7	5				Geoff Teare	2
T2B	2	8	7	7	9	5				TOTAL	38
Judge Totals										Ring Totals	
Dan Butcher		139								Ring 1	139
Geoff Teare		169								Ring 2	169

Saturday – 349 runs

STD	NOV										
Division	4	8	12	16	20	24	24C	14	18	Judge	Ring
NOV A					1	1				Geoff Teare	1
NOV B			1	2		2				Geoff Teare	1
NOV P		1	1	1						Geoff Teare	1
NOV		1	2	3	1	3				TOTAL	10
Division	4	8	12	16	20	24	24C	14	18	Judge	Ring
OPN			2		2	4				Geoff Teare	1
OPN P			1	1						Geoff Teare	1
OPN			3	1	2	4				TOTAL	10
Division	4	8	12	16	20	24	24C	14	18	Judge	Ring
EX				1	3	3				Geoff Teare	1
EX P			1	2	2					Geoff Teare	1
MAS		9	8	1	14	5				Geoff Teare	1
MAS P	1	5	9	15	3					Geoff Teare	1
EXC	1	14	18	19	22	8				TOTAL	82
Division	4	8	12	16	20	24	24C	14	18	Judge	Ring
PRM			2	1	10	3				Geoff Teare	1
PRM P			2	3	5	1				Geoff Teare	1
PRM			4	5	6	11	3			TOTAL	29
Division	4	8	12	16	20	24	24C	14	18	Judge	Ring
NOV A				1	1	1				Dan Butcher	2
NOV B			1	1	1	1				Dan Butcher	2
NOV P	1		1	2	1					Dan Butcher	2
NOV	1		2	4	3	2				TOTAL	12
Division	4	8	12	16	20	24	24C	14	18	Judge	Ring
OPEN			2		2	4				Dan Butcher	2
OPEN P			2	2						Dan Butcher	2
OPN			4	2	2	4				TOTAL	12
Division	4	8	12	16	20	24	24C	14	18	Judge	Ring
EX		1		1	3	2				Dan Butcher	2
EX P			1	1	1					Dan Butcher	2
MAS		8	6	3	14	6				Dan Butcher	2
MAS P	2	6	8	14	4					Dan Butcher	2
EXC	2	15	15	19	22	8				TOTAL	81
Division	4	8	12	16	20	24	24C	14	18	Judge	Ring
PRM			2	2	10	3				Geoff Teare	1
PRM P	1		3	3	1					Geoff Teare	1
PRM	1	3	5	5	11	3				TOTAL	28
Division	4	8	12	16	20	24	24C	14	18	Judge	Ring
NOV A					1					Dan Butcher	2
NOV B		2			1	2				Dan Butcher	2
NOV		2			2	2				TOTAL	6
Division	4	8	12	16	20	24	24C	14	18	Judge	Ring
OPEN				1						Dan Butcher	2
OPEN P				1						Dan Butcher	2
OPN				2						TOTAL	2
Division	4	8	12	16	20	24	24C	14	18	Judge	Ring
EX		2		1	2					Dan Butcher	2
EX P				1						Dan Butcher	2
MAS		3	3	1	10	3				Dan Butcher	2
MAS P		1	2	3						Dan Butcher	2
EXC		6	5	6	12	3				TOTAL	32
Division	4	8	12	16	20	24	24C	14	18	Judge	Ring
PREF	2	4	3	6	1					Dan Butcher	2
REG		1	4	4	13	7				Dan Butcher	2
T2B	2	5	7	10	14	7				TOTAL	45
Judge Totals										Ring Totals	
Dan Butcher		190								Ring 1	159
Geoff Teare		159								Ring 2	190

Sunday – 330 runs

STD	NOV										
Division	4	8	12	16	20	24	24C	14	18	Judge	Ring
NOV A					1	1				Dan Butcher	1
NOV B			1	2	2	2				Dan Butcher	1
NOV P			1	1	1					Dan Butcher	1
NOV			2	3	4	3				TOTAL	12
Division	4	8	12	16	20	24	24C	14	18	Judge	Ring
OPEN			1		2	5				Dan Butcher	1
OPEN P				1	2					Dan Butcher	1
OPN			1	1	4	5				TOTAL	11
Division	4	8	12	16	20	24	24C	14	18	Judge	Ring
EX		1			2	3				Dan Butcher	1
EX P			1	1	3					Dan Butcher	1
MAS		8	7	2	13	4				Dan Butcher	1
MAS P	1	4	9	13	4					Dan Butcher	1
EXC	1	13	17	16	22	7				TOTAL	76
Division	4	8	12	16	20	24	24C	14	18	Judge	Ring
PRM		4	2	1	9	2				Dan Butcher	1
PRM P		1	3	5	1					Dan Butcher	1
PREM		5	5	6	10	2				TOTAL	28
Division	4	8	12	16	20	24	24C	14	18	Judge	Ring
NOV A					1	1				Geoff Teare	2
NOV B			1	1	3	1				Geoff Teare	2
NOV P	1		2	2						Geoff Teare	2
NOV	1		3	3	4	2				TOTAL	13
Division	4	8	12	16	20	24	24C	14	18	Judge	Ring
OPEN			1		2	5				Geoff Teare	2
OPEN P			1	2	1					Geoff Teare	2
OPN			2	2	3	5				TOTAL	12
Division	4	8	12	16	20	24	24C	14	18	Judge	Ring
EX		1			1	1				Geoff Teare	2
EX P				1						Geoff Teare	2
MAS		8	5	2	13	5				Geoff Teare	2
MAS P	1	5	9	12	7					Geoff Teare	2
EXC	1	14	14	15	21	6				TOTAL	71
Division	4	8	12	16	20	24	24C	14	18	Judge	Ring
PRM		2	1	1	9	2				Dan Butcher	1
PRM P			3	2	1					Dan Butcher	1
PREM		2	4	3	10	2				TOTAL	21
Division	4	8	12	16	20	24	24C	14	18	Judge	Ring
NOV A					1					Geoff Teare	2
NOV B		1		1	1	2				Geoff Teare	2
NOV P			1	2	2					Geoff Teare	2
NOV		1	1	3	4	2				TOTAL	11
Division	4	8	12	16	20	24	24C	14	18	Judge	Ring
OPEN					2					Geoff Teare	2
OPEN P				1	1					Geoff Teare	2
OPN				1	3					TOTAL	4
Division	4	8	12	16	20	24	24C	14	18	Judge	Ring
EX				1						Geoff Teare	2
EX P			1							Geoff Teare	2
MAS		5	2	2	9	4				Geoff Teare	2
MAS P		1	1	2						Geoff Teare	2
EXC		6	4	5	9	4				TOTAL	28
Division	4	8	12	16	20	24	24C	14	18	Judge	Ring
PREF	1	3	4	6	3					Geoff Teare	2
REG		2	3	3	12	6				Geoff Teare	2
T2B	1	5	7	9	15	6				TOTAL	43
Judge Totals										Ring Totals	
Dan Butcher		148								Ring 1	148
Geoff Teare		182								Ring 2	182